

# Building Primary-Level Palliative Care Capacity Across Canada: Pallium Canada's LEAP Courses, Products and Infrastructure.

Dr. José Pereira<sup>1,2,3,4</sup>, Kathy Downer EdD<sup>1</sup>, Brady Riordan<sup>1</sup>, Dr. Lori Teeple<sup>1</sup>, Odéte Carreira<sup>1</sup>,  
Colleen Drake<sup>1</sup>, Gaëlle Parsons<sup>1</sup> PhD, Xavier Pereira<sup>1</sup>, Dr. Henrique Parsons<sup>1, 4</sup>.

<sup>1</sup> Pallium Canada, <sup>2</sup> College of Family Physicians of Canada, <sup>3</sup>Division of Palliative Care, Department of Family Medicine, McMaster University,  
<sup>4</sup>Faculty of Medicine, University of Ottawa  
info@pallium.ca www.pallium.ca

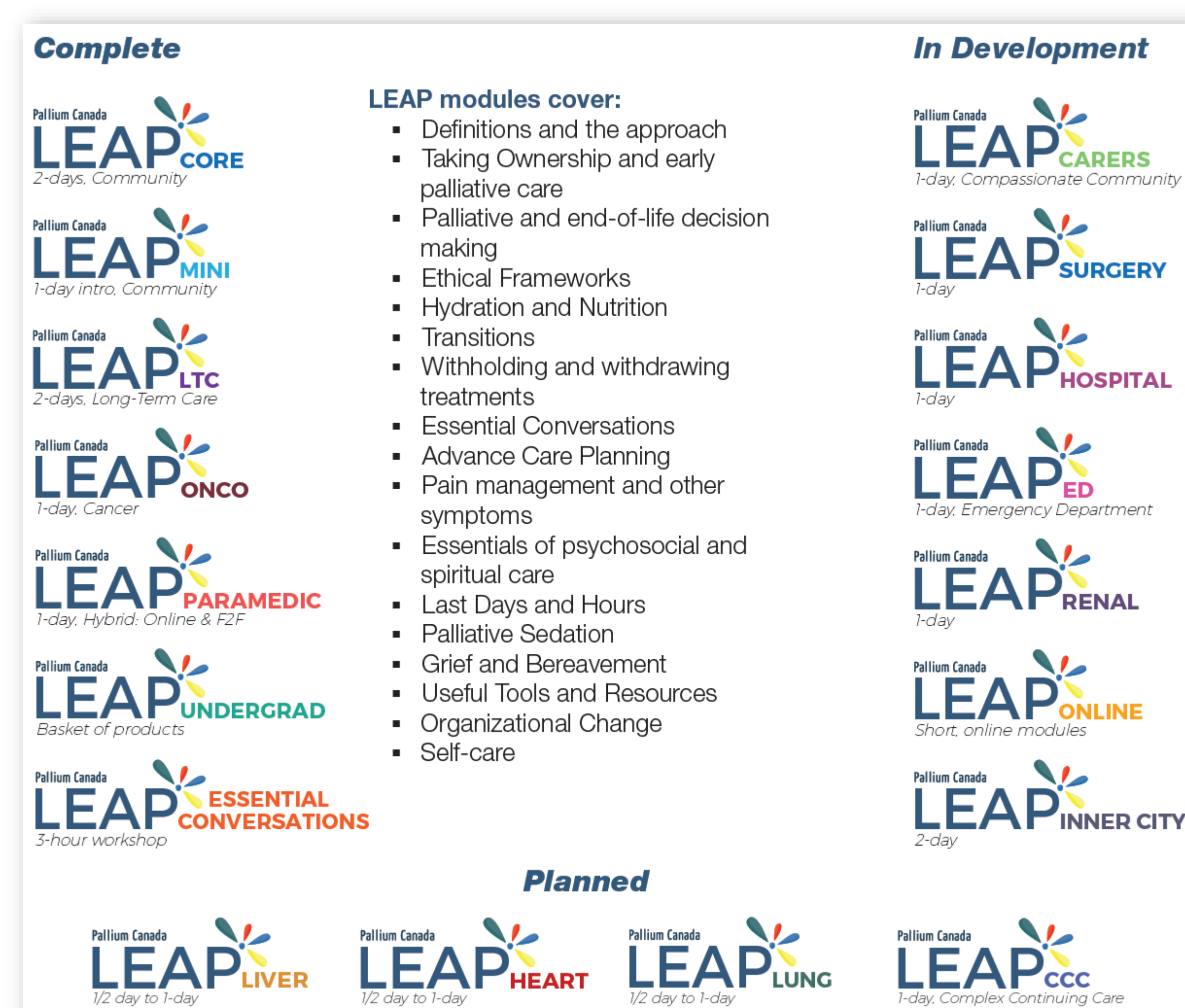
## Pallium Canada

- Pallium Canada is a pan-Canadian, non-profit organization.
- Mission: To build primary-level palliative care capacity through education, quality improvement and compassionate communities.
- Represents a large community of practice (educators, clinicians, administrators, leaders) across Canada.
- Governed by a Board of Directors that includes business, community, legal and clinical leaders.
- Has an interprofessional National Advisory Committee that includes clinicians, educators, leaders and family members.
- Since its inception in 2001, has been funded mainly by Health Canada (Government of Canada) grants. No industry funding.

## LEAP course objectives

- Enhance the palliative care approach skills of family physicians, other specialist physicians, nurses, pharmacists, social workers and other health care professionals;
- Introduce learners to local palliative care resources;
- Promote interprofessional learning and collaboration;
- Disseminate local, provincial and national resources (e.g. Advance Care Planning toolkits);
- Catalyze Quality Improvement related to palliative care;
- Serve as a knowledge translation and diffusion vehicle.

Figure 1: LEAP Courses



## LEAP dissemination

Figure 2: Certified LEAP facilitators: March 2016



Figure 3: LEAP courses delivered from April 2015-March 2016



Figure 4: Number of LEAP Learners (Nov 2015 to Mar 2016)

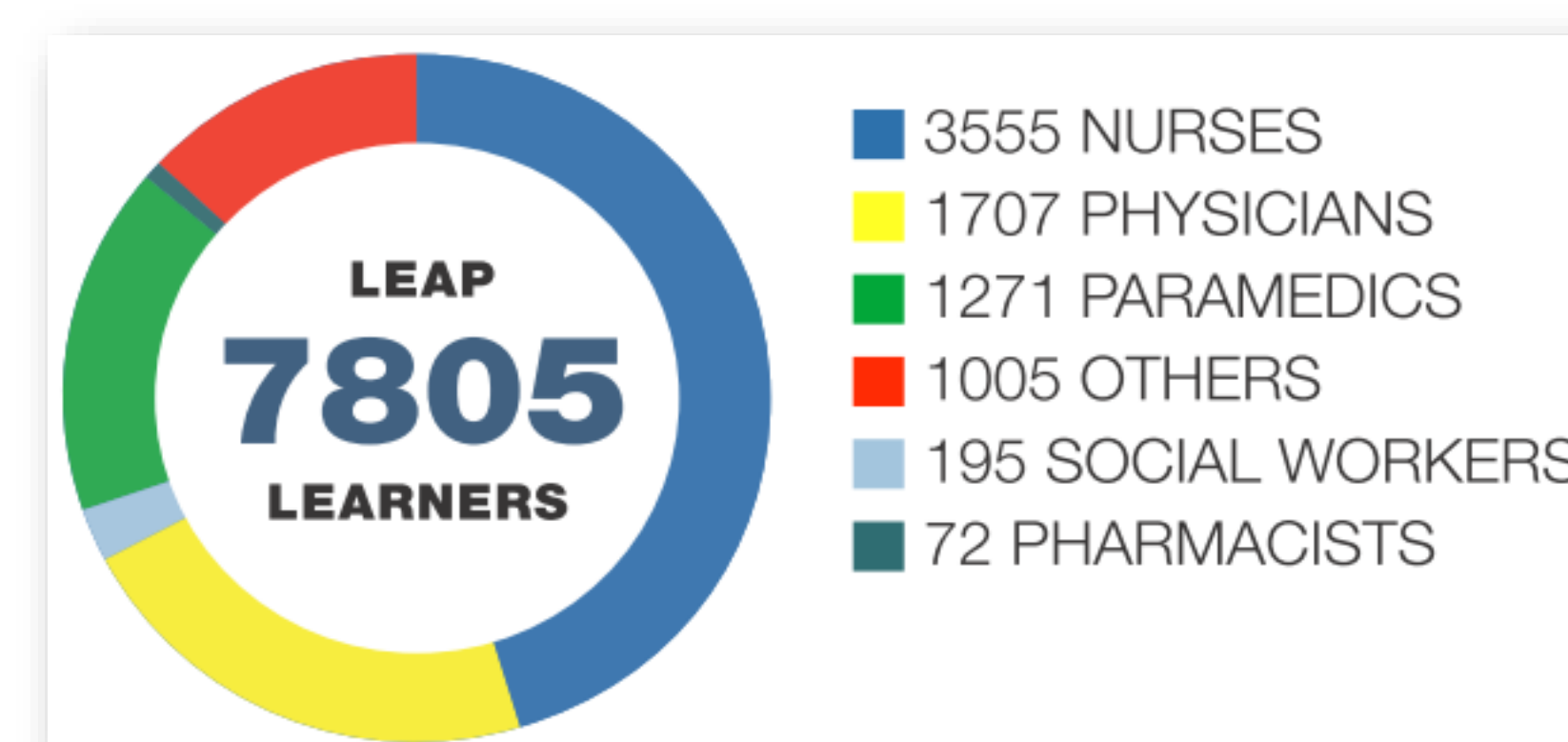


Table 1: Features of LEAP courses

- Competency-based
- Interprofessional
- Variety of learning approaches, including case-based small and large group learning; reflective exercises, theory bursts (overviews) Courses are developed by interprofessional teams of subject matter experts, educators and target learners
- Iterative development process (PDSA cycles)
- Extensively peer reviewed.
- Modular & flexible (allows modules to be presented on their own).
- Courses vary in length and format: Workshops of 1 to 3 hrs long, half-day, full day and 2-day workshops, online modules, hybrid (flipped)
- Different versions for different settings
- CPD credits
- English & French
- Regularly updated

## LEAP support products

### Pallium Portal

- Secured online learning management system
- Facilitators and learners register online, download course material.& complete pre- and post course reflections.
- All courses registered online.

### Pallium Facilitator Program

- Hybrid online and classroom (1 day) training program
- Criteria to become facilitator (palliative care experience).
- Certification for 3 years.

### Pallium Palliative Pocketbook

Referenced, peer-reviewed; practical. Paper and e-book versions (Amazon & iBooks)

### Pallium APP

Clinical tips & diagrams to aid care, communication and teaching (iTunes app store & Google Play)

### LEAP Manuals

Manuals for learners & facilitators (with notes & prompts)

### Pallium Videos,

- Short trigger tapes for reflection & learning
- Doodles, Snippets & Communication videos

## LEAP evaluation framework

Pre-Course	Post-Course	4-6 months Post-Course
<ul style="list-style-type: none"> <li>○ Knowledge Quiz</li> <li>○ Attitudes Survey</li> <li>○ Self-Perceived Comfort</li> </ul>	<ul style="list-style-type: none"> <li>○ Knowledge Quiz</li> <li>○ Attitudes Survey</li> <li>○ Self-Perceived Comfort (Now vs pre design)</li> <li>○ Commitment to Change</li> <li>○ Course Evaluation</li> </ul>	<ul style="list-style-type: none"> <li>○ Commitment to Change Review</li> </ul>

## Next steps: Research

- Analyze the impact of the course on learner knowledge, attitudes, skills (data of over 9000 course participants).
- Analyze the Commitments to Change post vs 4-mth post.
- Assess impact of courses on health care system by analyzing administrative databases (e.g. impact of LEAP Paramedics in Nova Scotia and PEI, LEAP Core training of 5 family health teams in Ontario, LEAP LTC training on 3 LTC facilities)

## LEAP scalability model

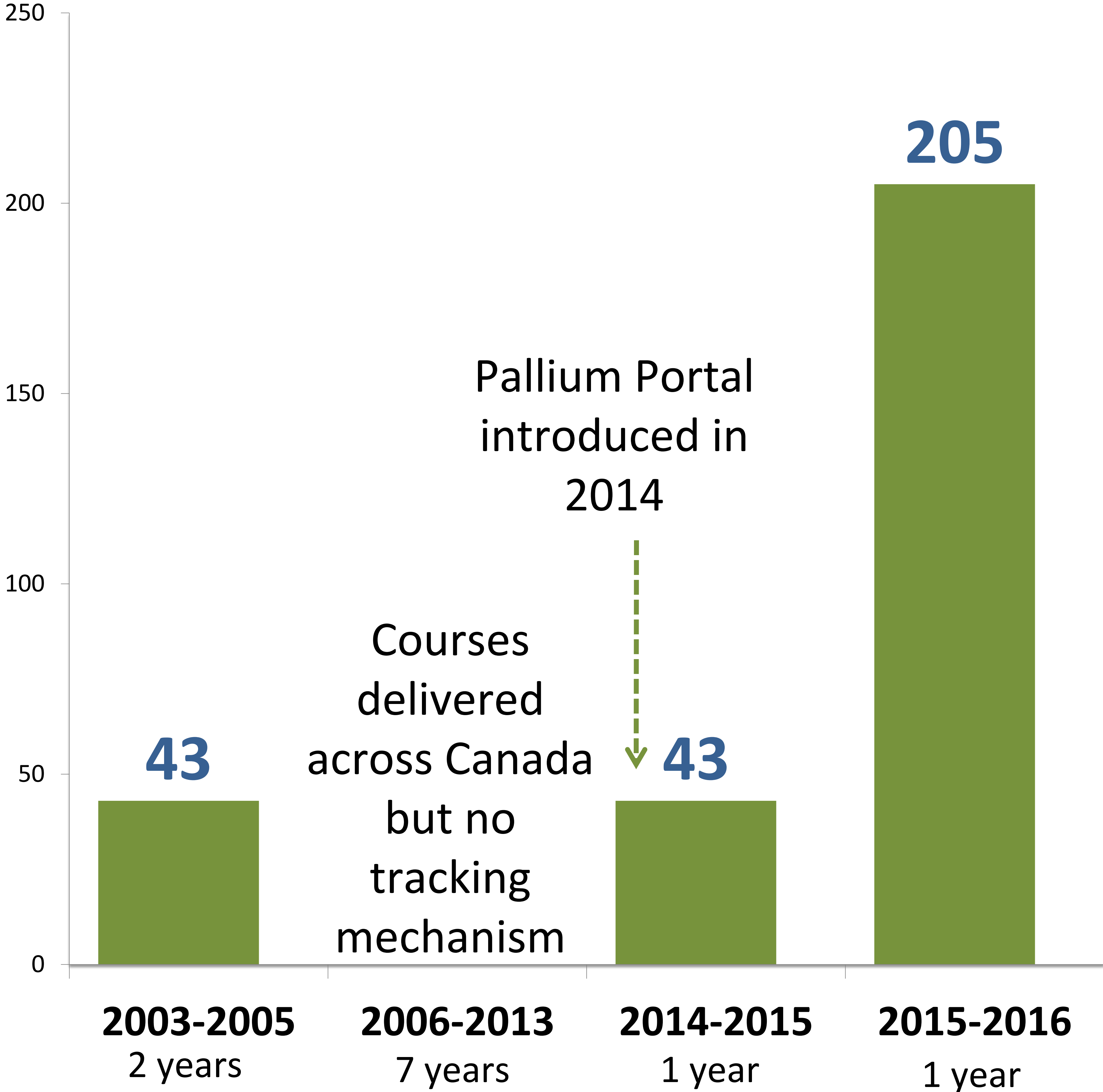
- Courses organized locally by local organizations.
- Courses facilitated by local LEAP Facilitators (access to Facilitators Pool).
- Cost recovery for local organizations.
- LEAP support products.
- Strategic partnerships (e.g. Cancer Care Ontario, Ontario Renal Network, Nova Scotia Paramedic Services, BC Palliative Care Secretariat).

## LEAP highlights

- The College of Family Physicians of Canada's Continuing Professional Development Award for 2016



### Number of LEAP Courses delivered





### Number of LEAP Participants

